

PLEASE READ THE REMINDERS BELOW TO ENHANCE THE ENJOYMENT OF YOUR NEW **COSTA COFFEE** CUP/BOTTLE. THANK YOU FOR YOUR PURCHASE!

USAGE & CARE INSTRUCTIONS TO PREVENT DAMAGE & INJURY

WARNINGS

1. Do not fill with liquids over 90°C (194°F). Extremely hot liquids can cause pressure buildup, which can lead to ejection of liquid and scalding. Do not shake your cafetiere, and keep upright at all times. Do not over-fill. Ensure your lid is fully pushed on before use.
2. This cafetiere is designed for the use of hot liquids in mind, please take care as hot liquids can cause injury. It is difficult to judge the temperature of your beverage so please be careful.
3. Hot Liquids can create internal pressure resulting in a dangerous release of hot water vapour. Always remove the lid on the cafetiere in an upright position away from the face. Hot liquid can cause serious injury.
4. Excessive force when plunging may result in scalding as hot liquid may splash out from the pot.
5. Do not use the pot that is scratched, cracked or damaged in any way.

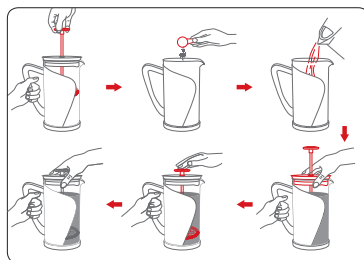
CAUTION

1. KEEP OUT OF REACH OF CHILDREN.
2. Do not Microwave.
3. Do not Freeze.
4. Your product is not suitable for flammable, corrosive or chemical substances, carbonated drinks, dry ice, water soluble vitamins, fruit juice, and drinks /soups with a high salt content.

CARE

1. Do not put your cafetiere in the dishwasher
2. Do not soak.
3. Hand clean before first use and wash after each use.
4. Take care when taking sections apart for cleaning
5. Do not use any cleaning brushes made of metal or hard plastic, and never rinse using scouring agents, solutions or bleaches.
6. Should you have any product questions, please visit costa.com

How it Works



1. Pull plunger out from the carafe.
2. Add coarsely ground coffee.
3. Pour hot water into the pot. Leave a minimum of 2cm space at the top of the pot.
4. Place the plunger with filters and lid. Leave plunger raised and turn the spout opening away from the spout to retain heat.
5. Let it brew for at least four minutes. At this point, do not plunge yet.
6. When the coffee has brewed, use the weight of your hand to slowly lower the plunger down.
7. If the filter becomes difficult to press or clogged; remove the plunger, stir the coffee and plunge again.
8. Align the spout opening to the spout and pour the coffee.



Not suitable for Children



Food Safe



Do not Heat



Do not use
in Microwave



Do not put in the
Dishwasher



The cup/bottle is not suitable
with use of flammable, corrosive
or chemical substances



Caution – Contents
could be hot

COSTA
COFFEE